

CAREER PRACTITIONERS' CONFERENCE

SPORT AT LA TROBE UNIVERSITY

CAREER PRACTITIONER CONFERENCE 2025



ACKNOWLEDGEMENT OF COUNTRY

La Trobe University acknowledges our campuses are located on the lands of many Traditional Custodians in Victoria and New South Wales. We recognise their ongoing connection to the land and value their unique contribution to the University and wider Australian society.

La Trobe University is committed to providing opportunities for Aboriginal and Torres Strait Islander people, both as individuals and communities, through teaching, learning, research and partnerships across all our campuses.



SPORT

GUIDE

TOP 50
GLOBALLY
FOR
SPORT

AT LA TROBE, OUR FOCUS ON HEALTH AND WELLBEING SHAPES A UNIQUE PERSPECTIVE ON SPORT, SETTING US APART FROM OTHER UNIVERSITIES.

Our world-class sport facilities welcome everyone from elite level athletes through to grassroots sport clubs and community groups. Our Sports Park also includes the Home of the Matildas and Rugby Victoria's future home of rugby – all right here on the Melbourne Campus.

As Victoria's #1 university for employer satisfaction¹, we partner with some of the best organisations in the sports industry to train the next generation of professionals through placements, work-integrated learning, industry opportunities, athletic scholarships and more.

Our research in the areas of nutrition and dietetics, and human movement and sports science is rated 'well above world standard'² and it's also helping us create long term improvements to health and wellbeing nationwide.

1. Quality Indicators for Learning and Teaching (QILT), 2023, 2022 Employer Satisfaction Survey.
2. Australian Research Council, 2019, Excellence in Research for Australia (ERA) Outcomes 2018.

TOP 50 WORLDWIDE

We're rated in the top 50 worldwide for sports-related subjects.

Quacquarelli Symonds (QS), 2024, QS World University Rankings by Subject 2024: Sports-Related Subjects

HOME OF THE MATILDAS

In 2023, we welcomed the CommBank Matildas to their new home at the La Trobe Sports Park. The Young Matildas and Future Matildas will also utilise the training facility.

7 x CAMPUSES

We're Victoria's only state-wide university, with seven campuses across Melbourne, regional Victoria and Sydney. So no matter where you want to study, you'll have opportunities to take part in sport and active recreation events and programs, access to real-world experience with elite sporting organisations and be able to gain industry connections to your local community.

LEARN WITH INDUSTRY

We partner with industry giants such as Carlton Football Club, Football Victoria and Bendigo Spirit to give you options for placements, work-integrated learning, internships and more.

#1

La Trobe is a leader in employer-graduate satisfaction, ranking #1 in Victoria and #3 in Australia

Quality Indicators for Learning and Teaching (QILT), 2023, 2022 Employer Satisfaction Survey



TOP UNIVERSITIES WORLDWIDE

We're in the top 1% of universities, placing us within the top 250 of universities worldwide.

Times Higher Education (THE), 2023, World University Rankings 2023; Consejo Superior de Investigaciones Científicas (CSIC), 2023, Ranking Web of Universities

DIFFERENT DIFFERENT WAYS INTO UNI

There's more than one way to secure an offer into your dream course through our pathways, early entry programs, double degrees and packaged offers.

SPORTS PARK

Our Sports Park has been awarded Australia's first 6 Star Green Star design rating by the Green Building Council Australia, recognising world leadership in sustainable building practice.

INDUSTRY PARTNERSHIPS

MAJOR PARTNERS

CARLTON FOOTBALL CLUB

In partnership with the Carlton Football Club, the Carlton College of Sport provides a unique learning program offering higher education diplomas in sport coaching and development, and elite sport business. In 2023, we extended our partnership for a further five years, taking our commitment to twelve years by the end of 2027. This partnership facilitates a minimum of twenty placements for students each year.

FOOTBALL VICTORIA

We're the new official higher education partner of Football Victoria, the governing body for Victorian football (soccer). Their new home at the Home of the Matildas within the La Trobe Sports Park precinct will host the state sporting body's administrative activities, high performance training, development and recovery programs.

Not only does the Home of the Matildas provide exceptional facilities for elite sporting teams and grassroots community soccer clubs, but our partnership opens the doors to unique opportunities for our students and researchers in sport science, allied health and sports medicine within Australia's most popular team sport.

BENDIGO SPIRIT

Thanks to our partnership with the Bendigo Spirit women's team, we continue to provide opportunities for women in sport at a national level, while also creating opportunities for placements, research and work integrated learning.

COMMUNITY DELIVERY PARTNERS

ACHPER VICTORIA

Based at the La Trobe Sport Park Stadium since 2021, it has hosted numerous state-wide secondary and primary school conferences for Victoria's PE teaching cohort.

AFL CENTRAL VICTORIA

We welcome the league's teams and their families onto our Bendigo Campus for events 60 times per year, as we support the development of an active lifestyle for children and teenagers and embed our students within AFLCV with work integrated learning opportunities.

AFL NORTH EAST BORDER

We host AFLNEB events and teams at our Albury-Wodonga Campus throughout the year and provide our students with placement opportunities.

BENDIGO ACADEMY OF SPORT

The Academy is involved with our academic experts and emerging sport researchers. In our strength and conditioning lab, Academy athletes work with sport exercise science students to discover how to best prepare for elite competition.

BENDIGO BRAVES

A long-term partnership that continues to provide opportunities to students through placements, research, work integrated learning and employment at the Red Energy Arena.

BENDIGO PIONEERS

Based on campus, the La Trobe University Bendigo Pioneers women's and men's teams compete in the top tier under-18 Australian Rules Football competition. The Coates Talent League teams are supported with collaboration on professional development, high performance training, graduate employment, work integrated learning and research projects in conjunction with an industry PhD.

BENDIGO STRIKERS NETBALL CLUB

Our newly formed partnership provides opportunities for women in sport in the regions to compete in the Victorian Netball League at a national level, while also creating opportunities for placements, research and work integrated learning.

BENDIGO SPORTS STAR

A newly formed partnership that supports and fosters athletic potential and skills in our local community.

THE NORTHERN FOOTBALL NETBALL LEAGUE

A long-term partner of La Trobe, in 2020 we formed a 20-year agreement that provides league access to our Sports Park Stadium.



GET
INDUSTRY
EXPERIENCE
WHILE YOU
STUDY



TEAL HOCKING
Bachelor of Education
LEAP emerging athlete
Netball – Bendigo Strikers

"I ALWAYS KNEW I WANTED TO BE INVOLVED IN SPORT, AND I FELT PASSIONATE ABOUT EXERCISE PHYSIOLOGY AND THE OPPORTUNITY TO BE ACROSS TRAINING ATHLETES AND TAKING THEM THROUGH REHAB. I'VE GAINED INVALUABLE EXPERIENCE WORKING ALONGSIDE HIGH LEVEL COACHES AND RUBBING SHOULDERS WITH MANY EXPERIENCED ATHLETES."

PATRICK BLOOD

Bachelor of Exercise Science and Master of Exercise Physiology (alumni)

Head of Performance, Bendigo Spirit (Women's National Basketball League – WNBL)

Head of Strength and Conditioning, Bendigo Strikers (Victorian Netball League – VNL)





HOME OF THE MATILDAS

In 2023, we welcomed the CommBank Matildas to their purpose-built, high-performance home base at the Home of the Matildas at La Trobe University. Located in the Sports Park precinct, the Home of the Matildas at La Trobe University is the largest football-specific infrastructure project in Australia's history, and it's available for the team's exclusive use whenever they are in camp, providing an elite training environment as the pre-eminent facility in the region.

Photo Credit:
Rachel Bach/By The White Line

OUR FACILITIES

The perfect place to learn, train, research and play.

LA TROBE SPORTS PARK

Located at our Melbourne Campus, the La Trobe Sports Park is not only a unique learning hub for students, but it also hosts major participation sports events, grassroots sport competitions and recreation opportunities.

LA TROBE SPORTS STADIUM

This state-of-the-art stadium has six high-ball multipurpose courts for a variety of indoor sports. Each court hall is equipped with an event office, technical support and amenities, and our FIBA-Connect Stadium has automated camera technology for live streaming and player tracking.

Court Hall 1 also includes a 1,100 seat retractable grandstand, which enables

the La Trobe Sports Park Stadium to host large-scale indoor community

and professional sporting events that require a show court facility.

SYNTHETIC PITCH

Our FIFA-1 standard pitch comes with built in shock pads made from recycled rubber materials to help reduce impact (while making a sustainability impact!) and injury.

'GANBU DJILA' (ONE PLAY)

Located at Charles La Trobe College, Ganbu Djila is our Multipurpose Synthetic Field. It's the new home to the La Trobe University Baseball Club, as part of the wider stage 3 development of the Sports Park Precinct.

SPORTS PARK PAVILION

Club rooms, change rooms (including gender neutral change rooms) and a multi-purpose function room.



SPORTS PERFORMANCE HUB

The hub includes an exercise physiology lab, strength & conditioning lab, biomechanics lab, heat and altitude chambers and services for athlete testing, nutrition, recovery and wellbeing. The hub enables us to offer world-class research, performance and career outcomes to our sport students with Work Integrated Learning (WIL) opportunities and experiences alongside sub-elite and elite athletes.

SPORTING FIELDS

Whether your game is soccer, cricket, ultimate frisbee, touch – we have a suite of elite sporting fields to support any sporting program.

TONY SHEEHAN OVAL

Home to the La Trobe University Football Club, the oval features a premier Santa Ana Couch playing surface, and is supported with a video playback scoreboard and lighting technology that's suitable for televised night games. It has immediate proximity to changing facilities for a wide range of user groups in the Sports Park Pavilion.



FITNESS CENTRES

Get out of the classroom and stay active with a range of activities available at our on-campus fitness centres.

MELBOURNE (INDOOR SPORTS CENTRE)

– fully equipped gym, fitness assessments and personalised training programs

– three specialty group exercise studios catering for reformer pilates, functional group training, mind and body classes and more

– multi-purpose indoor court including basketball, badminton, volleyball and indoor soccer facilities in addition to netball, tennis and squash courts

– 25-metre heated indoor pool – and deep-water pit

– rock climbing wall.

BENDIGO

– fully equipped gym – exercise studios for group exercise training

– exercise science facilities

– sports field, pavilion and basketball court.



LA TROBE ELITE ATHLETE PROGRAM (LEAP)

We're an elite athlete friendly university and member of the Elite Athlete Education Network that that proudly supports over 150 top level athletes and performers through grants, programs and scholarships.

Over the years we've supported athletes in a range of sports at a number of major and international events, including the Olympic Games, Commonwealth Games and World University Games.

THE PROGRAM

We support you with everything you need to combine study and sport, with in-kind benefits while studying at La Trobe, including:

- tailored strength and conditioning programs
- dedicated academic case management and assistance with timetabling, flexible assessment and alternative exam arrangements
- support with course transfers, cross-institutional study and credit transfers
- gym memberships
- personalised nutrition programs
- admission to the La Trobe Student Excellence Academy
- access to tailored career advice and student wellbeing
- official LEAP apparel
- subsidised allied health support
- access to on-campus sport facilities.

FINANCIAL ASSISTANCE

If you're an Elite Athlete Program member at La Trobe, you can apply for targeted scholarships, subsidised intervarsity representation and grants from the La Trobe Elite Athlete Support Fund, supported by TechnologyOne. This fund provides yearly grants towards the costs of elite competition, including travel, accommodation and registration expenses.

ELITE ATHLETE ADJUSTMENT FACTOR

If you're an elite athlete applying for entry into a La Trobe undergraduate course via VTAC, you could be eligible for the Elite Athlete Adjustment Factor. This means you could have a five aggregate point adjustment factor applied to your admission into La Trobe. All you need to do is demonstrate how your sporting commitments have impacted your Year 12 studies, and how you meet the criteria as an elite athlete.

Applications open in August each year.

Discover more:
latrobe.edu.au/sport/elite-athlete



HOW TO APPLY

1

CHECK IF YOU'RE
ELIGIBLE TO APPLY



2

COMPLETE THE ONLINE
APPLICATION FORM



3

SUBMIT YOUR COMPLETED
FORM ONLINE ALONG WITH
SUPPORTING DOCUMENTATION

AMY BACHMANN
Bachelor of Dental Science

UNIQUE FEATURES

- **Ranked #8 in the WORLD** out of 461 for sport – Shanghai Global Ranking of Sport Science Schools and Departments for 2024
- Truly world class teaching and learning facilities in the **La Trobe Sports Park**
- **Course accreditation** enables registration in a professional field
- **Diverse options** for students seeking a career in sport
- Excellent support program for **elite athletes**
- Unique network of **industry partners** that support students' experience
 - Carlton Football Club
 - Football Victoria (Home of the Matildas)
 - Rugby Victoria
 - The Australian Ballet
 - Bendigo Spirit (WNBL)
 - Northern Football Netball League
 - Long list of regional and collaborative partners

COURSES

One year Diplomas (via Carlton College of Sport)

- Diploma of Elite Sport Business
- Diploma of Sport Coaching and Development

SINGLE DEGREES (3 YEARS)

- Bachelor of Sport and Exercise Science (multiple majors)
- Bachelor of Sport and Recreation Management (multiple majors)
- Bachelor of Media and Communication (major in Sports Media)

SINGLE DEGREES in related fields (4 YEARS)

- Bachelor of Physiotherapy (Honours)
- Bachelor of Podiatry (Honours)

POSTGRADUATE Specialties

- Master of Sport Analytics
- Master of Strength and Conditioning
- Master of Exercise Physiology
- Master of Sports and Exercise Physiotherapy (for registered physiotherapists)

ENTRY REQUIREMENTS

One year Diplomas (via Carlton College of Sport)

- Diploma of Elite Sport Business (ATAR 41)
- Diploma of Sport Coaching and Development (ATAR 45)
 - VCE – 25 in English (EAL)

SINGLE DEGREES (3 YEARS)

- Bachelor of Sport and Recreation Management (multiple majors) (new in 2025)
- Bachelor of Media and Communication (major in Sports Media) (ATAR 61.05)
 - VCE – 25 in English (EAL)
- Bachelor of Sport and Exercise Science (multiple majors) (ATAR 60.09)
 - VCE – 25 in English (EAL) and at 20 in a relevant subject

SINGLE DEGREES in related fields (4 YEARS)

- Bachelor of Physiotherapy (Honours) (ATAR 96.4)
- Bachelor of Podiatry (Honours) (ATAR 76.8)
 - VCE – 30 in English (EAL) and 25 in a specialist subject

PATHWAYS

- VTAC for school leavers with minimum ATAR
- Apply Direct for mature age or alternative experience
- Transfer after a year of Bachelor of Health Sciences
- Graduate from Diplomas at Carlton College of Sport – bringing 1 year credit into second year of specialist degree

CAREERS

- **Sport Scientist** – working with elite or professional teams, fitness advisor, researcher, pathway to further study as specialist in sport or allied health (physiotherapy)
- **Sport Manager** – managing events, programs, athletes, organisations that provide participation or spectator experiences across the broad sport and recreation industry
- **Sport media** – media, communications and journalism skills reporting or promoting all aspects of the broad sport and recreation industry
- **Allied health professional** – working to support individuals participate or perform in sport and active recreation activities

CARLTON COLLEGE OF SPORT



Established in 2019 as a partnership between La Trobe and Carlton Football Club, the Carlton College of Sport gives you the chance to study, gain real-world experience and build the connections you need to break into the industry.

You can choose from two higher education diplomas – the Diploma of Elite Sport Business or the Diploma of Sport Coaching and Development. The course is delivered by La Trobe staff in a teaching space at the Carlton Football Club headquarters, IKON Park.

With the opportunity to complete 100 hours of industry-based placement, as well as access to elite athletes, coaches, high performance staff and mentors, you'll get immersed in the Club and obtain exclusive insights to events, community activations, facility operations, fan engagement, match-day protocols and more.

WE RESPECT THE STANDARDS OF HIGH-PERFORMANCE SPORT.
WE'RE RELIABLE. WE SHOW UP. WE EMBRACE OPPORTUNITY.
WE'RE DEDICATED, ACCOUNTABLE AND COMMITTED.
WE WORK TOGETHER AND WE HAVE FUN.

REAL-WORLD EXPERIENCE

GET 100 HOURS OF INDUSTRY-BASED PLACEMENT AT CARLTON FOOTBALL CLUB, AFL VICTORIA, SOUTH EAST MELBOURNE PHOENIX AND MORE.

GRADUATE JOBS

APPLY FOR ONE OF FOUR GRADUATE JOBS AT THE CARLTON FOOTBALL CLUB, OFFERED EXCLUSIVELY TO GRADUATING CARLTON COLLEGE OF SPORT STUDENTS EACH YEAR.

DIRECT ENTRY

DEPENDING ON WHICH DIPLOMA YOU CHOOSE, YOU CAN GAIN A PATHWAY INTO OUR BACHELOR OF BUSINESS OR BACHELOR OF SPORT COACHING AND DEVELOPMENT.

"I ABSOLUTELY LOVED MY TIME AT CCOS, AND IT WAS THE BEST DECISION I COULD HAVE MADE. THE RELATIONSHIPS I MADE AND THE EXPERIENCES I HAD THROUGHOUT THE YEAR WERE UNMATCHED AND REALLY OPENED MY EYES TO THE SPORTING INDUSTRY. I GOT TO COMPLETE SO MANY AMAZING PLACEMENTS IN DIFFERENT AREAS OF THE CLUB AND MEET SO MANY STAFF ... I COULDN'T BE MORE GRATEFUL FOR THE OPPORTUNITY."

AYANA OSMOND
Diploma of Elite Sport Business



LAW AT LA TROBE UNIVERSITY



WE'RE INSPIRING CHANGE- MAKERS

La Trobe Law School aims to be renowned for our progressive and practical courses that inspire students to become change-makers. We equip them with the knowledge and skills to make a difference in local and global communities.



LAW COURSES

SINGLE DEGREES (4 YEARS)

- Bachelor of Laws (Hons)

DOUBLE DEGREES (5 YEARS)

- Combine the Bachelor of Laws (Hons) with:
 - Bachelor of **Criminology**
 - Bachelor of **Commerce**
 - Bachelor of **Arts**
 - Bachelor of **Business**
 - Bachelor of **Global Studies**
 - Bachelor of **Media Communications**
 - Bachelor of **Politics, Philosophy and Economics**
 - Bachelor of **Psychological Science**
 - Bachelor of **Science**

DOUBLE DEGREE (5 ½ YEARS)

- Bachelor of Laws (Hons) and Bachelor of **Biomedicine**

Duration based on full-time study with continued progression on typical study plan.

WHY A DOUBLE DEGREE?

- ✓ May complement the type of Law you're interested in
- ✓ Provides you with a wider range of knowledge
- ✓ Expands the industries in which you might work

LA TROBE LAW SCHOOL CAN TAKE YOU ANYWHERE

La Trobe Law School graduates are:

- Solicitors in law firms of every size
- Barristers
- In-house counsel
- Community and legal aid lawyers
- Magistrates and judges
- Government lawyers and policy advisors
- Entrepreneurs
- Consultants



CRIMINOLOGY COURSES

SINGLE DEGREE (3 YEARS)

- Bachelor of Criminology

DOUBLE DEGREES

- Combine the Bachelor of Criminology with:
 - Bachelor of **Laws** (Hons): 5 years
 - Bachelor of **Psychological Science**: 4 years
 - Bachelor of **Cybersecurity**: 4 years

HONOURS

- Bachelor of Criminology (Hons): add 1 year

WHY A DOUBLE DEGREE?

- ✓ May complement the type of Law you're interested in
- ✓ Provides you with a wider range of knowledge
- ✓ Expands the industries in which you might work

Duration based on full-time study with continued progression on typical study plan.

CRIMINOLOGY AT LA TROBE CAN TAKE YOU ANYWHERE

- Criminologist (research or industry)
- Specialist police officer
- Family violence specialist
- Offender management specialist
- Court registrar
- Crime analyst
- Border protection
- Government/public service
- Intelligence officer
- Cybercrime investigator
- State or federal corrections employee
- Community programs manager
- Policy officer
- Youth justice worker
- Case manager at community organisations



WHY LA TROBE LAW SCHOOL?

VIBRANT, INCLUSIVE & DIVERSE

We are one of the most welcoming, diverse and inclusive law schools in the state and have a vibrant student community, including numerous events planned by the Law and Criminology Students' Associations.

OUTSTANDING TEACHERS

Learn from legal and criminology experts dedicated to student success, ensuring students are equipped with the knowledge to succeed as professionals in the fields of law and justice.

INTERNATIONAL EXCHANGE

Law students can take advantage of our network of international partners to travel and study abroad.



WHY LA TROBE LAW?

PLACEMENT OPPORTUNITIES

Placements in the La Trobe Law Clinic, Victoria Legal Aid, Northern Community Legal Centre, Department of Justice and Community Safety, Tennis Australia, Supreme Court of Victoria, Magistrates' Court of Victoria, private law firms and more.

ADVOCACY TRAINING

Our outstanding advocacy and mooting programs ensure our graduates are prepared and confident in the courtroom.

PRACTICAL EXPERIENCE

We offer career readiness training through the Career Ready Advantage program, so graduates are prepared for a professional workplace.



WHY CRIMINOLOGY AT LA TROBE?

- Close relationship with **industry partners**, so graduates are well prepared for the workplace.
- An extensive and diverse **placements program** available from second year giving students access to the workplace.
- A bespoke **application support program** for students interested in the highly competitive Corrections internship. Many students who undertake the internship receive an offer of employment with Corrections.
- **Peer Mentoring** where later year students mentor first year Criminology students to enable study success.



La Trobe Law students have several placement opportunities. Each is combined with practical academic study and career-related activities.

- **Early experience:** Start your first placement in 2nd year, linking your studies with legal practice early. LTU is the only Victorian law school offering 2nd-year law placements.
- **Industry engagement:** Choose from two upper-year electives for further industry engagement:
 1. **Legal Practice:** Gain experience in various roles (15 days)
 2. **Custom Placement:** Work with an organisation of your choice, including interstate and overseas options (15-30 days)
- **Honours Research:** Complete your Honours Research project in the final year through a placement combined with your research topic (15-30 days).
- **Community Legal Clinic:** Fulfil your core admission to legal practice subject, Legal Practice and Conduct, while working at a La Trobe community legal clinic.

La Trobe Criminology students have several placement opportunities. Each is combined with practical academic study and career-related activities.

- **Early experience:** Start your first placement in 2nd year, linking your classroom studies with industry early.
- **Industry engagement:** Choose from two upper-year electives for further industry engagement:
 1. Gain experience in various roles (15 days)
 2. Work with an organisation of your choice, including interstate and overseas options (15-30 days)
- **Network of partners:** Placement partners include PRACE (Community Forms and Advocacy Assistance Service), Community Corrections, the Victims of Crime Assistance Tribunal and courts.
- **Prepare for your future workplace:** career readiness training is embedded within the Criminology curriculum through the Career Ready Advantage program.

WORK WITH CLIENTS

- The Law School's community legal clinics, in partnership with Whittlesea Community Legal Centre, operate year and include Divorce, Family Law, Family Violence, Fines and Civil Actions, Wills & Wishes
- Clinics are operated by students, with a qualified and supportive lawyer-supervisor
- Students work in pairs to manage cases, write file notes, interview clients, plan options for the client, while developing confidence and practical employment skills
- La Trobe Law School also partners with a range of organisations to provide other placement experiences for our students



PATHWAYS INTO CRIMINOLOGY OR LAW

ATAR

- Law: 90 (75 for Aspire)
- Criminology: 60.6

OTHER PATHWAYS

Bachelor of Criminology

- Diploma of Arts (Criminology)
- Internal transfer in any degree at the end of your first year with a 60% average (full-time study)

Bachelor of Laws (Hons)

- Internal transfer mid-way through your first year in any degree with a 73% average or at the end of your first year with a 70% average (full-time study)



BRIGHT FUTURES FOR LA TROBE LAW GRADUATES

- **High employment rate:** 92.6% of our Law graduates are employed in law within 6 months.
- **Top ranked:** La Trobe graduates are ranked 1st in Victoria, 3rd in Australia by employers (QILT 2022).
- **Enhanced prospects:** Law graduates have higher employment rates and starting salaries than science, engineering and IT graduates.
- **Higher lifetime earnings:** Law graduates enjoy a lifetime earnings premium compared to the average university graduate in Australia.



COMPUTER SCIENCE, IT, CYBERSECURITY AT LA TROBE UNIVERSITY

CAREER PRACTITIONER CONFERENCE 2025



TOPICS

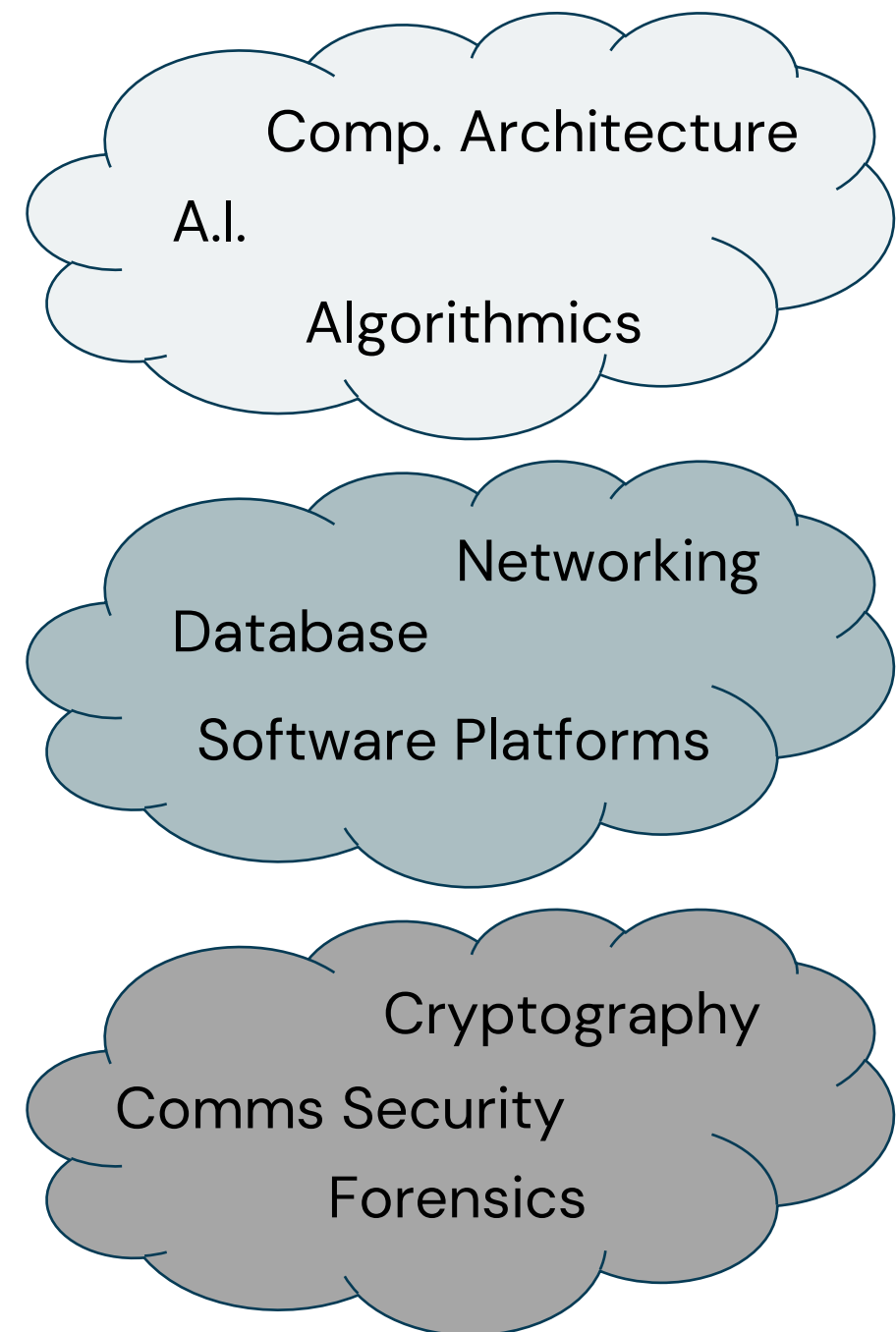
- Defining the disciplines (Comp Sci ,Info Tech, Cybersecurity)
 - Career Prospects
 - La Trobe's emphasis on ready graduates
 - The La Trobe difference
-
- Course structure
 - Pre-requisites and entry requirements

DEFINING THE DISCIPLINES

Computer Science: Focuses on the theoretical foundations and development of algorithms, software, and computing systems

Information Technology: Applies computing solutions to manage, store, and process information efficiently in various domains

Cybersecurity: specialises in protecting systems, networks, and data from threats and vulnerabilities



CAREER PROSPECTS

Double-Digit
Growth

“Every business is a technology business”

Chris Long CEO, Founder and LTU Alumni 4pi Labs

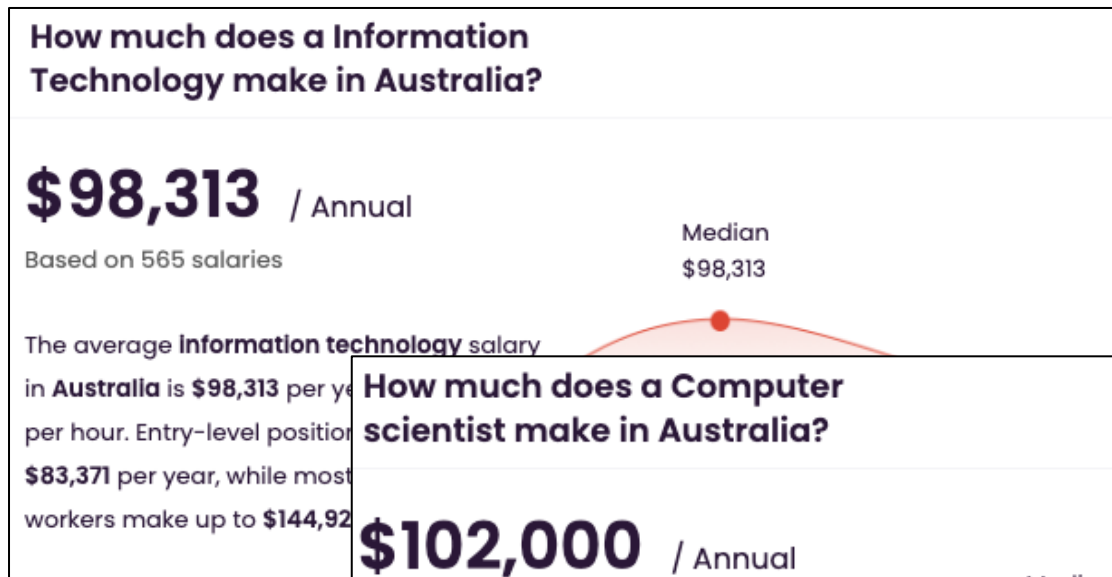
Occupation	Skill Level	Employment Level - May 2023 ('000)	Projected employment level - May 2028 ('000)	Projected employment level - May 2033 ('000)	Projected employment growth - five years to May 2028		Projected employment growth - ten years to May 2033	
					('000)	(%)	('000)	(%)
ICT Professionals	-	382.4	431.6	466.5	49.2	12.9%	84.0	22.0%
ICT Professionals nfd	-	17.6	19.4	20.9	1.9	10.6%	3.4	19.2%
ICT Professionals nfd	1	17.6	19.4	20.9	1.9	10.6%	3.4	19.2%
Business and Systems Analysts, and Programmers	-	230.7	260.3	281.9	29.6	12.8%	51.1	22.2%
Business and Systems Analysts, and Programmers nfd	1	0.3	0.4	0.4	0.0	10.5%	0.1	19.1%
ICT Business and Systems Analysts	1	51.6	58.1	62.8	6.5	12.7%	11.2	21.7%
Multimedia Specialists and Web Developers	1	14.2	16.0	17.3	1.8	12.8%	3.2	22.3%
Software and Applications Programmers	1	164.7	185.9	201.3	21.2	12.9%	36.7	22.3%
Database and Systems Administrators, and ICT Security Specialists	-	64.3	72.6	78.1	8.3	12.9%	13.8	21.5%
Database and Systems Administrators, and ICT Security Specialists	1	64.3	72.6	78.1	8.3	12.9%	13.8	21.5%
ICT Network and Support Professionals	-	69.8	79.3	85.5	9.5	13.6%	15.7	22.5%
ICT Network and Support Professionals nfd	1	0.6	0.7	0.7	0.1	10.9%	0.1	19.5%
Computer Network Professionals	1	39.7	45.2	48.7	5.5	13.8%	9.1	22.8%
ICT Support and Test Engineers	1	13.0	14.8	15.9	1.8	13.9%	3.0	23.0%
Telecommunications Engineering Professionals	1	16.5	18.6	20.1	2.1	12.7%	3.5	21.4%

Australian Government J&SA – 01/08/2024

CAREER PROSPECTS

—SIMPLY PUT:

- Strong job prospects
- Great starting graduate salary
(Compared to National
Average Grad Salary \$74,086)
- Future-proofing your career in
a technology-led world



LA TROBE'S FOCUS ON READY GRADUATES

- Career Ready Advantage Award
- Work–Integrated Learning (WIL) and Industry Placements
- Career Services and Resources



WHY CHOOSE CS, IT, CYBER AT LA TROBE

The ability to immerse yourself in a technical degree with strong job prospects and industry demand

- On Campus
- Online
- Majors
- Employability



WHAT WE PROVIDE SETS US APART – ON CAMPUS

What makes studying in our department different to other Victorian Computer Science and IT departments?

- Course Design (Let's have a look [B. Information Technology](#))
- Innovative Subjects ([Software Engineering Major](#))
- Quality Teaching (Our Academics)
- Industry Connections / Relevance (IBL Program)
- Facilities (Visit them on a tour)
- Clubs and Societies
 - Google Developer Club
 - Computer Society
 - Cybersecurity Society



WHAT WE PROVIDE SETS US APART – ON CAMPUS

- **State of the ART Facilities**
- **Student Clubs and Societies**
 - Google Developer Student Club
 - Computer Society
 - La Trobe Cybersecurity Society
- **Face to Face teaching**
- **Lectures**
- **Labs**
- **Consultation**



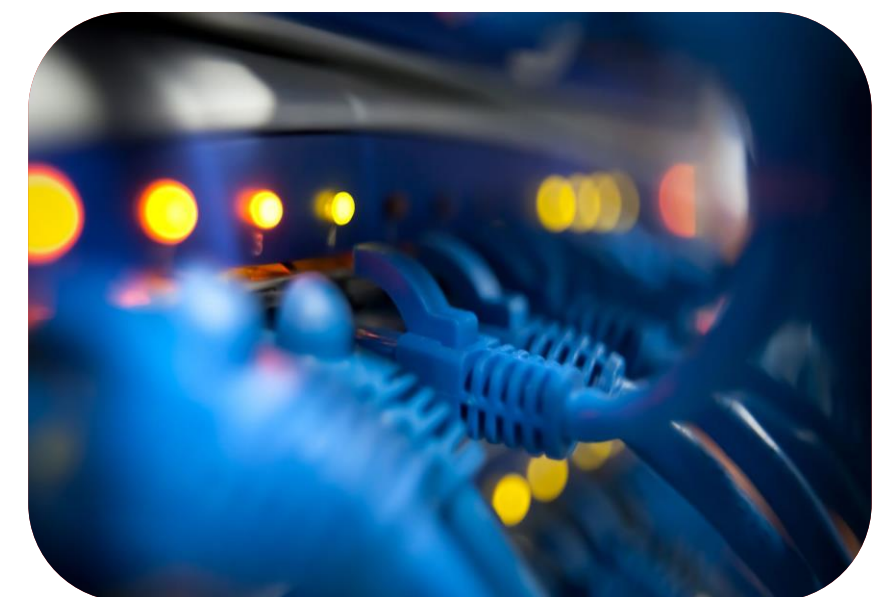
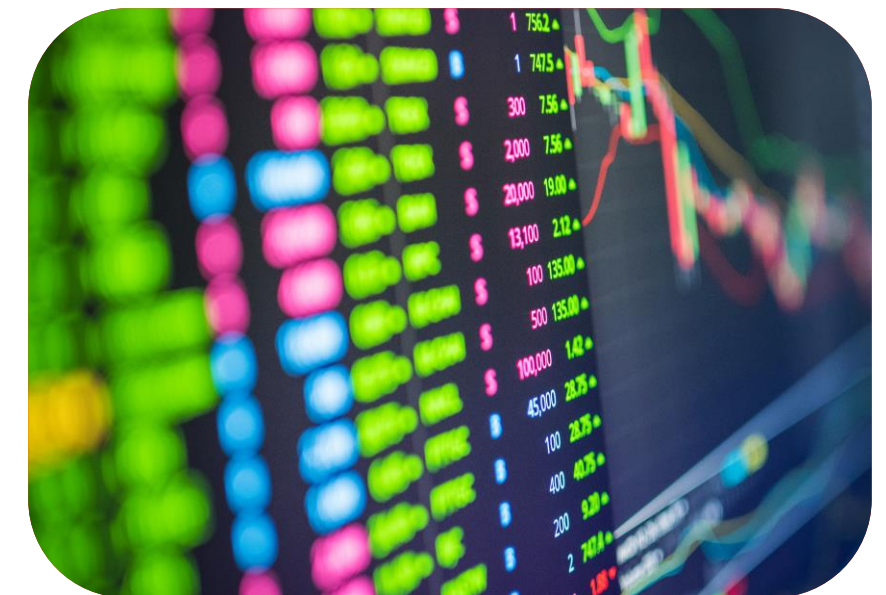
WHAT WE PROVIDE SETS US APART – ONLINE

- Here to support online course delivery with tailored experiences
- Undergraduate & Postgraduate



WHAT WE PROVIDE SETS US APART – MAJORS

- [Artificial intelligence](#)
- [Cloud analytics](#)
- [Data science](#)
- [Information systems](#)
- [Network engineering](#)
- [Software engineering](#)



WHAT WE PROVIDE SETS US APART

- EMPLOYABILITY

- Capstone Project
- Industry-Based Learning
- All courses are Australian Computer Society (ACS) accredited

Every undergraduate has industry exposure core in their degree



REAL-WORLD EXPERIENCE THROUGH PRACTICAL WORK PLACEMENTS



NB: Example placement opportunities of non-clinical placement partners. Course placement options may vary.

MULTIPLE COURSES & MAJORS

SINGLE DEGREES (3 YEARS)

- Bachelor of IT
- Bachelor of Computer Science
- Bachelor of Cybersecurity

DOUBLE DEGREES (4 YEARS)

- Combine the Bachelor of CS with:
 - Bachelor of Commerce
- Combine the Bachelor of Cybersecurity with:
 - Bachelor of Criminology
 - Bachelor of Psychological science
 - Bachelor of Commerce

MAJORS

- As previously described to enhance the fit for industry

ENTRY REQUIREMENTS

Pre-requisites

2025 Minimum ATAR

B. IT 56 (Bundoora)

B. Computer Science 61.75 (Bundoora)

B. Cybersecurity 60.2 (Bundoora)

B. Computer Science / B. Commerce 85.4 (Bundoora)

B. Cybersecurity / B. Criminology 66.05 (Bundoora)

B. Cybersecurity / B. Psychological Science 62.25 (Bundoora)

B. Cybersecurity / B. Commerce 81.3 (Bundoora)

THANK YOU

|

QUESTIONS?